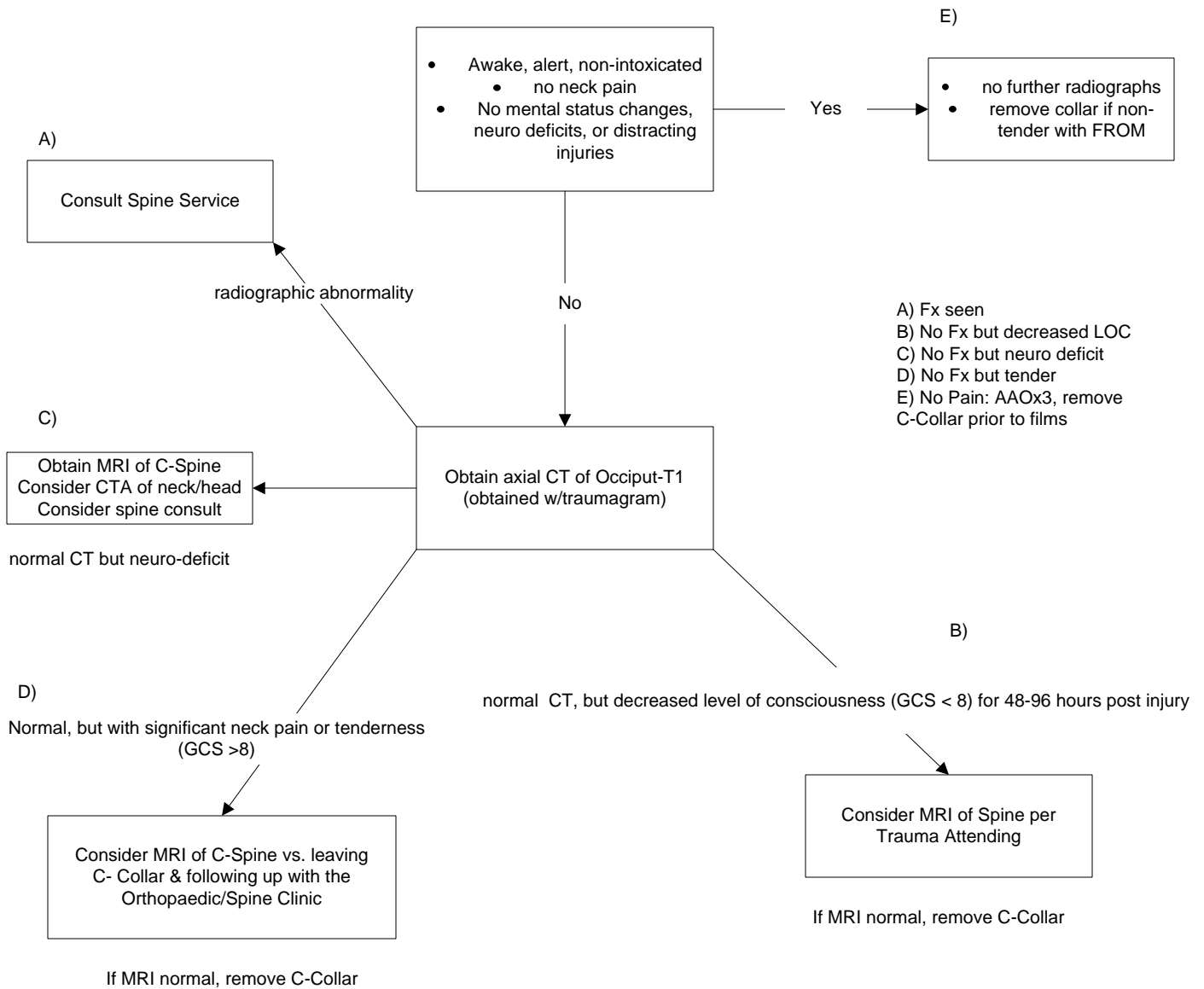


Cervical Spine Immobilization Practice Guidelines



References:

- Pasquale M, Fabian FC, et al.* Practice management guidelines for trauma from the Eastern Association for the Surgery of Trauma. 44:941-957.
- Marion DW et al.* Practice management guidelines for identifying cervical spine injuries following trauma (Update of the 1997 EAST Cervical spine clearance document).
- Brown et al.* J Trauma 2005 58(5): 890-896
- Holmes et al.* J Trauma 2005 58(5): 902-905
- Brohi et al.* J Trauma 2005 58(5): 897-901
- Gailen et al.* J Trauma 2003 55(2): 222-226
- Strell et al* JAMA 2001 286(15) 1841-1848